



MONTHLY MEMBERSHIP PROGRESS REPORT

District 11 D2

Results as of: 06/30/2019

GMT: STEVE ANTON

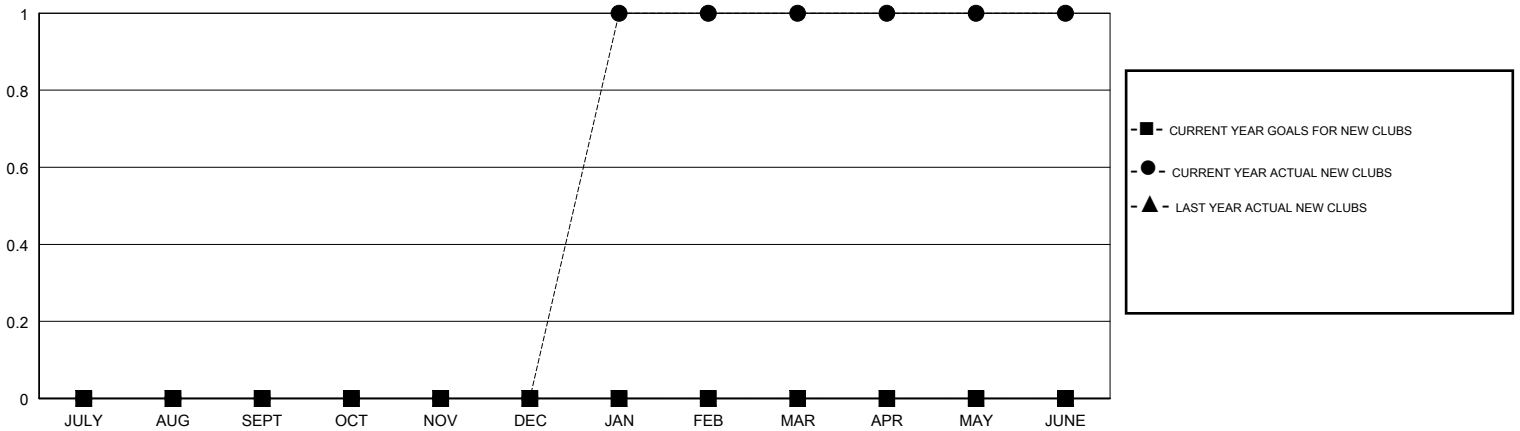
LOCATION MICHIGAN

GMT CA

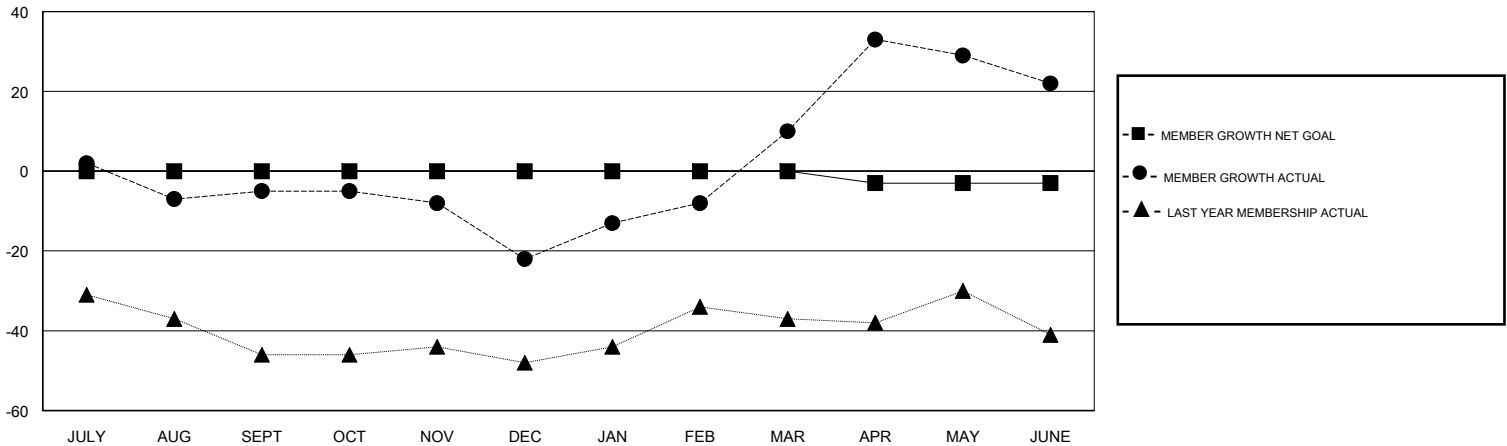
Clubs			
RESULTS FOR 2018-2019			
QUARTER	NEW CLUB GOAL	NEW CLUBS	DROPPED CLUBS
JULY/AUG/SEPT	0	0	0
OCT/NOV/DEC	0	0	0
JAN/FEB/MAR	0	1	0
APR/MAY/JUNE	0	0	0

Members			
RESULTS FOR 2018-2019			
QUARTER	MEMBER GROWTH NET GOAL	MEMBER GROWTH ACTUAL	DROPPED MEMBERS ACTUAL (including transfers)
JULY/AUG/SEPT	0	14	18
OCT/NOV/DEC	0	27	42
JAN/FEB/MAR	0	52	19
APR/MAY/JUNE	-3	54	39

GOALS AND ACTUAL NEW CLUBS CUMULATIVE



GOALS AND ACTUAL MEMBERS CUMULATIVE



DROPPED CLUBS: 0

30 CLUBS OF 45 ADDED 1 OR MORE NEW MEMBERS

GENDER DISTRIBUTION

MALE 964 (74.84%)
 FEMALE 324 (25.16%)
 Women Percentage Fiscal Year Goal: 23%

DROPPED MEMBERS

[CLICK HERE FOR CUMULATIVE MEMBERSHIP DATA](#)

DECEASED	23
CLUB CANCELLED	0
OTHER	95
TOTAL	118

TOTAL FAMILY UNIT MEMBERS	208
FAMILY MEMBERS PAYING HALF DUES	106